

# The Very Series

Featuring

The Very Series © Eric Carle LLC



Quilt designed by Jean Ann Wright  
Quilt size: 57" x 67"

*Andover  
Fabrics™*  
makower uk®

1384 Broadway • New York, NY 10018  
(800) 223-5678 • [www.andoverfabrics.com](http://www.andoverfabrics.com)

Revised 6/9/10

# The Very Series Quilt

Introducing Andover Fabrics new collection: *The Very Series* by Eric Carle

Quilt designed by Jean Ann Wright

Quilt finishes 57" x 67"  
4 pieced blocks 10" x 10"

## Fabric Requirements

		Yardage	
Fabric A	quilt center	1 panel	4343-M
Fabric B	border 4	2 yards	4344-M
Fabric C*	blocks	fat 1/8 yard	4345-B
Fabric D	blocks	fat 1/4 yard	4345-M
Fabric E	blocks	fat 1/8 yard	4346-B
Fabric F	blocks	fat 1/4 yard	4347-B
Fabric G	border 2	3/8 yard	4348-M
Fabric H	border 1, sashes	3/8 yard	3476-B
Fabric I**	blocks, border 3	1 yard	3476-R
*Additional fabric required for backing			
**Includes binding			
Fabric C*	backing	3 3/4 yards	4345-B

*For fans of Eric Carle's numerous children's books, this new fabric collection will bring smiles of recognition. Children all over the world have read millions of copies of his books, written since the 1960s. The novelty print fabrics contain images from some of his most beloved books—The Very Hungry Caterpillar, The Very Busy Spider, The Very Quiet Cricket, The Very Lonely Firefly, and The Very Clumsy Click Beetle. Made with simple piecing, this quilt is just the right size for your little reader to snuggle under as he or she enjoys some of the most popular children's books of all time.*

## Cutting Directions

**Note:** A fat 1/8 is a 9" x 20"-22" cut of fabric. A fat 1/4 is an 18" x 20"-22" cut. Sashes are cut the exact lengths required plus 1/4" seam allowances. Borders include 2" extra length plus seam allowances. WOF designates the width of fabric from selvedge to selvedge (approximately 42" wide).

**Fabric A** Cut (2) 20" x 20" squares, fussy cut to include the complete images

**Fabric B** Cut (2) borders 9 1/2" x 69 1/2", cut lengthwise for sides of quilt  
Cut (2) borders 9 1/2" x 59 1/2", cut lengthwise for top/bottom

**Fabric C\*** Cut (2) squares 5 7/8", cut in half diagonally to make 4 half-square triangles

**Fabric D** Cut (8) rectangles 3" x 5 1/2"  
Cut (4) squares 3 3/8", cut in half diagonally to make 8 half-square triangles  
Cut (4) squares 3"

**Fabric E** Cut (2) squares 5 7/8", cut in half diagonally to make 4 half-square triangles

**Fabric F** Cut (8) rectangles 3" x 5 1/2"  
Cut (4) squares 3 3/8", cut in half diagonally to make 8 half-square triangles  
Cut (4) squares 3"

**Fabric G** Cut (2) borders 2 1/2" x 49 1/2", cut crosswise and pieced for sides  
Cut (2) borders 2 1/2" x 39 1/2", cut crosswise for top/bottom

**Fabric H** Cut (2) borders 1 1/2" x 45 1/2", cut crosswise and pieced for sides  
Cut (1) sash 1 1/2" x 31 1/2"  
Cut (2) sashes 2" x 21 1/2"  
Cut (2) sashes 2" x 20"  
Cut (2) sashes 1 1/2" x 10 1/2"

**Fabric I** Cut (2) borders 1 1/2" x 51 1/2", cut crosswise and pieced for sides  
Cut (2) borders 1 1/2" x 41 1/2", cut crosswise for top/bottom  
Cut (7) strips 2 1/2" x WOF for binding.  
Cut (32) squares 3"

\*Additional fabric required for backing

**Backing** Cut (2) panels 38" x 65", pieced to fit quilt top with 4" overlap on all sides

# The Very Series Quilt

## Making and Assembling the Quilt

1. On the wrong side of each 3" red I square, draw a diagonal line from corner to corner. Position a red square on one end of a D rectangle. Stitch along the drawn line (Diagram 1). Be sure that the red triangle matches the corner of the D when pressed up. Trim the excess fabric. Repeat on the opposite end (Diagram 2). Make 8 Flying Geese units like this. Also make 8 units using I squares and F rectangles.

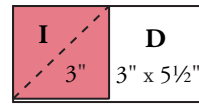


Diagram 1

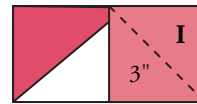
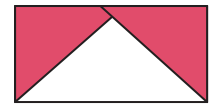


Diagram 2

### Flying Geese Unit



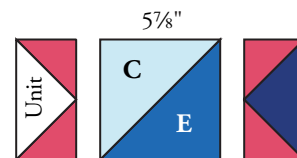
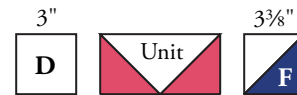
Make 8

2. Referring to the Block Diagram, sew together D and F  $3\frac{3}{8}$ " half-square triangles to make the pieced corners. Sew together C and E  $5\frac{7}{8}$ " half-square triangles to make the pieced center square. Join patches and pieced units into 3 rows, being careful to turn all parts as shown. Join the rows to make a block. Make 4 blocks.



Make 8

3. Refer to the Quilt Diagram and join 2 blocks, orienting them as shown. Repeat to join a second pair of blocks. Sew a  $1\frac{1}{2}$ " x  $10\frac{1}{2}$ " blue sash at the top of the top right pair of blocks and at the bottom of the lower left pair of blocks as shown. Sew a 2" x 20" sash to the appropriate side of each print A square. Sew a 2" x  $21\frac{1}{2}$ " sash to the top or bottom of the A squares as shown. Join the A square with the top block pair to make the top row. Repeat for the bottom row. Join the rows with the long blue sash in between. Sew the long blue borders to the sides.



Block Diagram

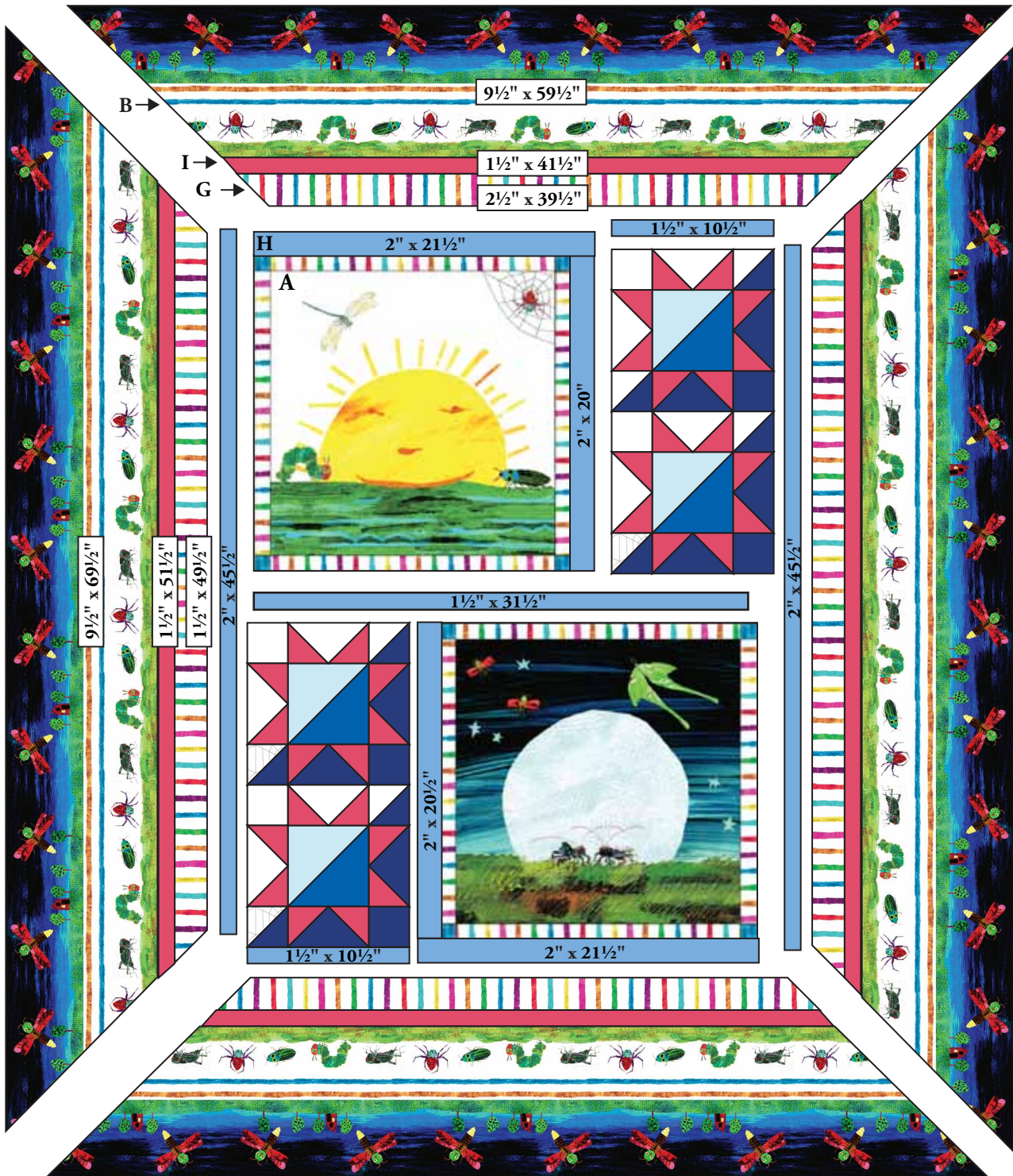
Make 4

4. Matching the centers, join the border strips together to make 4 border units. Sew the long units to the sides and the short units to the top and bottom. Miter the corners and trim the excess, leaving a generous  $\frac{1}{4}$ " seam allowance.

## Finishing the Quilt

5. Layer quilt with batting and backing. Quilt in the ditch around borders and block patches. Quilt around the printed motifs in the novelty prints. Bind to finish the quilt.

# The Very Series Quilt



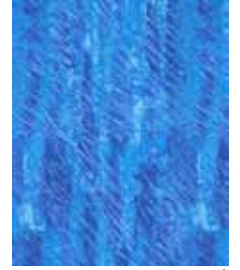
Quilt Diagram

1384 Broadway  
 New York, NY 10018  
 (800) 223-5678  
 www.andoverfabrics.com

# The Very Series

by Eric Carle

Andover  
 Fabrics™  
 makower uk®

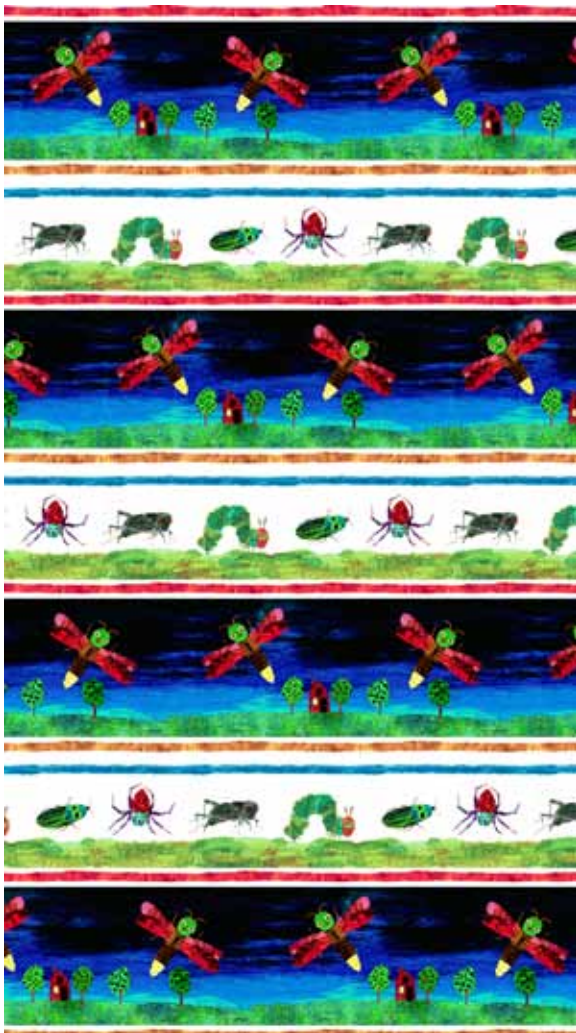


3476-B\*



3476-R\*

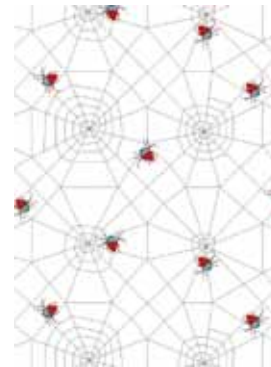
4343-M\*



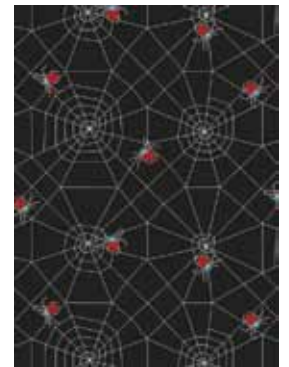
4344-M\*



4345-B\*



4345-M\*



4345-K



4346-B\*



4346-K



4347-B\*



4347-K



4348-M\*

\*Indicates fabric used in quilt pattern. Fabrics shown are 15% of actual size.

Revised 6/9/10

Free Pattern Download Available at [www.andoverfabrics.com](http://www.andoverfabrics.com)